



CATAMARAN BUOY



What is a catamaran buoy?

- ▶ It is a mooring buoy, patented by Resinex at the end of 80', designed with a unique leverage system (**Multi-Lever System**) in order to balance the ship mooring tension so that the buoy maintains the horizontal position, also under the worst working condition.
- ▶ The system, during the years, has evolved in terms of materials and engineering solutions that has always increased more the product safety and the quality.

Which are the advantages compared to the traditional mooring buoys?

- ▶ It guarantees the maximum safety for the operators and in the case of emergency
- ▶ The entire system avoids that the buoy, in mooring condition, presents strong oscillations that caused a risk for the people's and ship safety



- ▶ Modularity
- ▶ Multi-Lever System
- ▶ Stability and safety



Modularity



Multi-Lever System



Stability and Safety



Malaysia 2005

Diameter: 5.8 m

Height : 2 m

SWL: 75 t



Italy 2008

Diameter: 5.8 m

Height: 3 m

SWL: 250 t



Cameroun 2008

Diameter: 4.3 m

Height: 2.2 m

SWL: 90 t



Albania 2008

Diameter: 4.3 m

Height : 1.1 m

SWL: 60 t



Venezuela 2008

Diameter: 4.3 m

Height : 2.2 m

SWL: 75 t



Italy 2009

Diameter: 5.8 m

Height : 2.2 m

SWL: 300 t



Italy 2009

Diameter: 5.8 m

Height : 2.2 m

SWL: 300 t



Malaysia 2009

Refurbishment of the previous buoys



Venezuela 2010

Diameter: 4.3 m

Height : 2.2 m

SWL: 75 t



Tenerife 2010

Diameter: 5 m

Height : 2.2 m

SWL: 150 t



Italy 2010

Diameter: 4.3 m

Height : 1.1 m

SWL: 50 t



Malaysia 2012

Diameter: 5.8 m

Height : 2.5 m

SWL: 75 t



Malaysia 2014

Diameter: 5.8 m

Height : 2.5 m

SWL: 75 t



Angola 2015

Diameter: 5.8 m

Height : 2 m

SWL: 120 t





Italy 2016

Diameter: 4.3 m

Height : 1.1 m

SWL: 80 t



Egypt 2017

Diameter: 5.0 m

Height : 2.2 m

SWL: 180 t



Panama 2018

Diameter: 5.8 m

Height : 2 m

SWL: 275 t



Panama 2018

Diameter: 5.8 m

Height : 2 m

SWL: 275 t



DJI_0001



Panama 2018

Diameter: 5.8 m

Height : 2 m

SWL: 275 t



Egypt 2021

Diameter: 6.0 m

Height : 2.2 m

SWL: 90 t



Egypt 2021

Diameter: 6.0 m

Height : 2.2 m

SWL: 90 t



Colombia 2022

Diameter: 5.8 m

Height : 3.3 m

SWL: 300 t



Colombia 2022

Diameter: 5.8 m
Height : 3.3 m
SWL: 300 t



Curacao 2023

Diameter: 5.8 m

Height : 3.3 m

SWL: 400 t



CURACAO 2023

Diameter: 5.8 m

Height : 3.3 m

SWL: 400 t

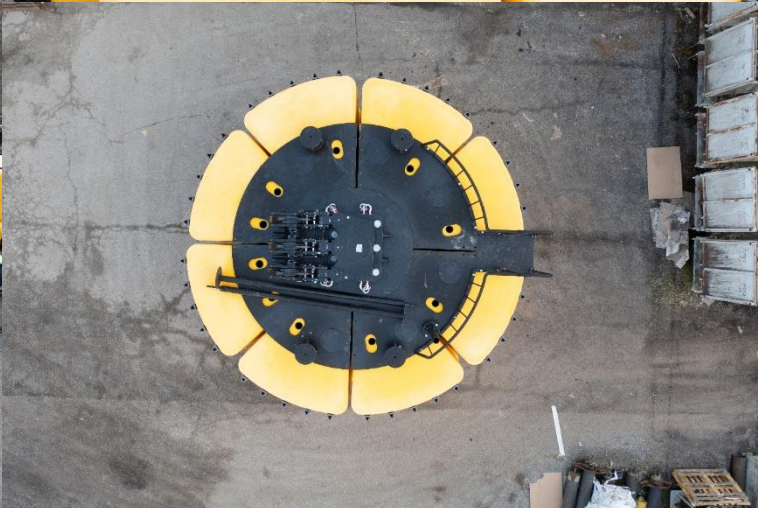


Romania 2024

Diameter: 5.8 m

Height : 1.2 m

SWL: 150 t



Thailand 2024

Diameter: 6,6 m

Buoyancy: 61 t

SWL: 275 t